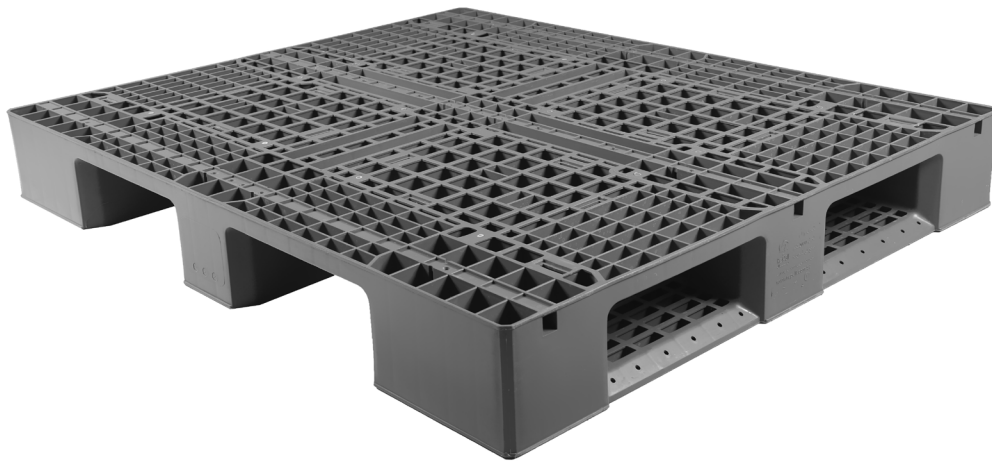


INDUSTRIAL PALLET [04]

04-MU



This pallet is made of high-quality plastic for day to-day service with load-bearing capacities between those of the lightweight and the hygienic pallet. It is widely used in closed loop transport, storage, automated material handling equipment throughout many warehouses, distribution centers and supermarkets. Optional with steel rod reinforcement on request.

TECHNICAL DATA

Pallet Name	Heavy Duty		Premium		Custom		Light	
Dimensions LxWxH (cm)	1200 x 1000 x 150		1200 x 1000 x 150		1200 x 1000 x 150		1200 x 1000 x 150	
Steel Enforcement	Without	With	Without	With	Without	With	Without	With
CODE	04-HD	04-HD/S	04-MU2	04-MU2/S	04-MU	04-MU/S	04-LW	N/A
Static Loading (kg)	5000	7500	4000	6000	4000	6000	3000	N/A
Dynamic Loading (kg)	1900	2500	1500	2200	1500	2200	1200	N/A
Racking Loading (kg)	900	1350	700	1200	700	1200	N/A	N/A
Structure								
Runners	3 longitudinal, 3 transverse		3 longitudinal		3 transverse		N/A	
Standard Color	●		●		●		●	
Container Load [40' HC]	323 PCs		378 PCs		378 PCs		378 PCs	
Standard Truck Load	520 PCs		520 PCs		520 PCs		520 PCs	
Rackable	✓		✓		✓			

AVAILABLE WITH

Safety Lips	✓
Caps	✓
Anti-Slip Rubber	✓
Client LOGO Printed	✓

OPTIONS ON REQUEST

Steel enforcement	✓
Client LOGO Engraved	✓
RFID	✓
Customized Color	✓
Fire Retardant	✓

ADVANTAGES

- ✓ Anti-impact perimeter
- ✓ Large window operations for easy handling
- ✓ Plastic pallets have fewer or no repairs.
- ✓ Plastic pallets improve efficiencies due to standard dimensions and lack of broken board.
- ✓ Plastic pallets offer better product protection no nails or broken boards to damage payload.
- ✓ Plastic pallets offer better stability no damaged or missing boards causing spills or falling stacks.
- ✓ Plastic pallets improve safety and lower workers compensation claims.
- ✓ Plastic pallets allow for greater utilization of warehouse space stability and higher stacking.

Recommendations for use

- ✓ Do not stack more than 30 pallets, which is equivalent to a height of 4.65 m when empty.
- ✓ Once stacked in height check that they are properly fitted.

- The values indicated are approximate and are based on practical experience and ISO 8611-1, evenly distributed load over pallet surface, at ambient temperature (23° C) for a specific time. Different load conditions produce different values that have to be checked at the customer's request. Any deterioration or breakage in the pallet may vary these results.
- Due to the characteristics of plastic materials and manufacturing process, the dimensions and the weight of the pallets may present certain tolerances.
- The specification can be affected in case of alteration of the product with parts and / or materials different from those approved by the RePall quality department.
- RePall reserves the right to modify any information herein indicated without prior notice.
- Any warranty, specification or liability on the part of RePall will be terminated in case of modification of the product with spare parts not supplied by RePall.

