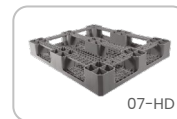
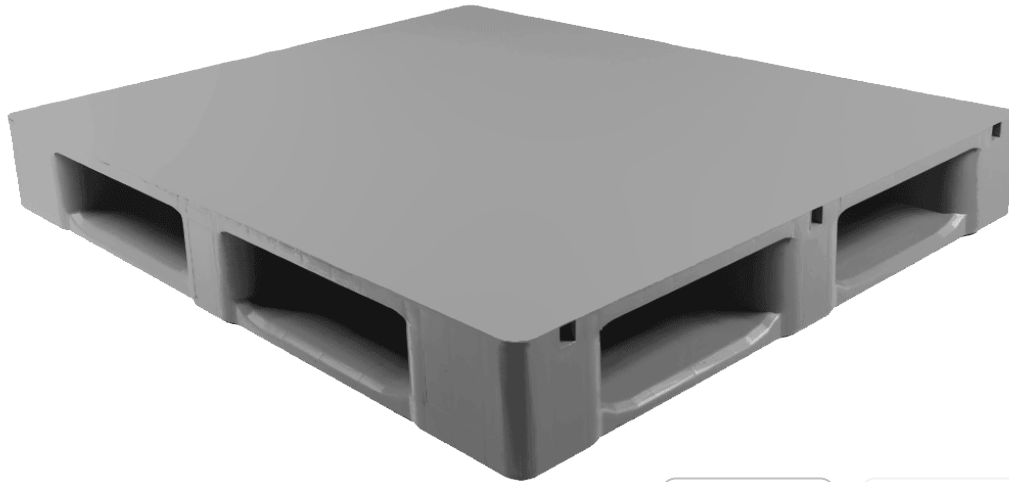


HYGIENIC PALLET [07]



07-HD



Due to its smooth, solid surface, RePal hygienic pallet is easy to clean thoroughly and consequently ideal for the storage and transportation of hygienic goods.

- Optional steel rod reinforcement
- Suitable for food & beverage Industry
- Suitable for high-bay racking

TECHNICAL DATA

Pallet Name	Heavy Duty		Medium	
Dimensions LxWxH (mm)	1200 x 1000 x 150		1200 x 1000 x 150	
Steel Enforcement	Without	With	Without	With
CODE	07-HD	07-HD/S	07-MU	07-MU/S
Static Loading (kg)	4000	5000	3000	4000
Dynamic Loading (kg)	2000	3000	1500	2500
Racking Loading (kg)	1200	1500	1000	1200
Structure				
Runners	3 longitudinal, 2 transverse		3 longitudinal	
Standard Color	●		●	
Container Load [40' HC]	323 PCs		520 PCs	
Standard Truck Load	520 PCs		520 PCs	
Rackable	✓		✓	

AVAILABLE WITH

Safety Lips	✓
Caps	✓
Anti-Slip Rubber	✗
Client LOGO Printed	✓

OPTIONS ON REQUEST

Steel enforcement	✓
Client LOGO Engraved	✓
RFID	✓
Customized Color	✓
Fire Retardant	✓

ADVANTAGES

- ✓ Anti-impact perimeter
- ✓ Large window operations for easy handling
- ✓ Plastic pallets have fewer or no repairs.
- ✓ Plastic pallets improve efficiencies due to standard dimensions and lack of broken board.
- ✓ Plastic pallets offer better product protection no nails or broken boards to damage payload.
- ✓ Plastic pallets offer better stability no damaged or missing boards causing spills or falling stacks.
- ✓ Plastic pallets improve safety and lower workers compensation claims.
- ✓ Plastic pallets allow for greater utilization of warehouse space stability and higher stacking.

Recommendations for use

- ✓ Do not stack more than 30 pallets, which is equivalent to a height of 4.65 m when empty.
- ✓ Once stacked in height check that they are properly fitted.

- The values indicated are approximate and are based on practical experience and ISO 8611-1, evenly distributed load over pallet surface, at ambient temperature (23° C) for a specific time. Different load conditions produce different values that have to be checked at the customer's request. Any deterioration or breakage in the pallet may vary these results.
- Due to the characteristics of plastic materials and manufacturing process, the dimensions and the weight of the pallets may present certain tolerances.
- The specification can be affected in case of alteration of the product with parts and / or materials different from those approved by the RePall quality department.
- RePall reserves the right to modify any information herein indicated without prior notice.
- Any warranty, specification or liability on the part of RePall will be terminated in case of modification of the product with spare parts not supplied by RePall.

